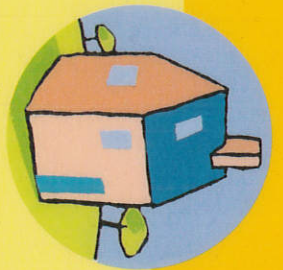
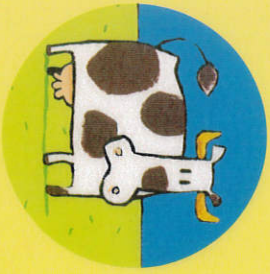




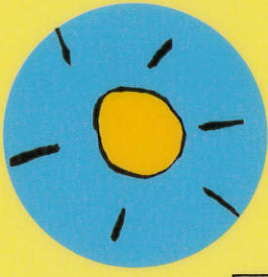
CHAT



MAISON



VACHE



SOLEIL

A crossword puzzle grid with the following structure:

- Row 1: 5 empty cells.
- Row 2: 5 empty cells.
- Row 3: 5 empty cells.
- Row 4: 5 empty cells.
- Row 5: 5 empty cells.
- Row 6: 5 empty cells.
- Row 7: 5 empty cells.
- Row 8: 5 empty cells.
- Row 9: 5 empty cells.
- Row 10: 5 empty cells.
- Row 11: 5 empty cells.
- Row 12: 5 empty cells.
- Row 13: 5 empty cells.
- Row 14: 5 empty cells.
- Row 15: 5 empty cells.
- Row 16: 5 empty cells.
- Row 17: 5 empty cells.
- Row 18: 5 empty cells.
- Row 19: 5 empty cells.
- Row 20: 5 empty cells.
- Row 21: 5 empty cells.
- Row 22: 5 empty cells.
- Row 23: 5 empty cells.
- Row 24: 5 empty cells.
- Row 25: 5 empty cells.
- Row 26: 5 empty cells.
- Row 27: 5 empty cells.
- Row 28: 5 empty cells.
- Row 29: 5 empty cells.
- Row 30: 5 empty cells.
- Row 31: 5 empty cells.
- Row 32: 5 empty cells.
- Row 33: 5 empty cells.
- Row 34: 5 empty cells.
- Row 35: 5 empty cells.
- Row 36: 5 empty cells.
- Row 37: 5 empty cells.
- Row 38: 5 empty cells.
- Row 39: 5 empty cells.
- Row 40: 5 empty cells.
- Row 41: 5 empty cells.
- Row 42: 5 empty cells.
- Row 43: 5 empty cells.
- Row 44: 5 empty cells.
- Row 45: 5 empty cells.
- Row 46: 5 empty cells.
- Row 47: 5 empty cells.
- Row 48: 5 empty cells.
- Row 49: 5 empty cells.
- Row 50: 5 empty cells.
- Row 51: 5 empty cells.
- Row 52: 5 empty cells.
- Row 53: 5 empty cells.
- Row 54: 5 empty cells.
- Row 55: 5 empty cells.
- Row 56: 5 empty cells.
- Row 57: 5 empty cells.
- Row 58: 5 empty cells.
- Row 59: 5 empty cells.
- Row 60: 5 empty cells.
- Row 61: 5 empty cells.
- Row 62: 5 empty cells.
- Row 63: 5 empty cells.
- Row 64: 5 empty cells.
- Row 65: 5 empty cells.
- Row 66: 5 empty cells.
- Row 67: 5 empty cells.
- Row 68: 5 empty cells.
- Row 69: 5 empty cells.
- Row 70: 5 empty cells.
- Row 71: 5 empty cells.
- Row 72: 5 empty cells.
- Row 73: 5 empty cells.
- Row 74: 5 empty cells.
- Row 75: 5 empty cells.
- Row 76: 5 empty cells.
- Row 77: 5 empty cells.
- Row 78: 5 empty cells.
- Row 79: 5 empty cells.
- Row 80: 5 empty cells.
- Row 81: 5 empty cells.
- Row 82: 5 empty cells.
- Row 83: 5 empty cells.
- Row 84: 5 empty cells.
- Row 85: 5 empty cells.
- Row 86: 5 empty cells.
- Row 87: 5 empty cells.
- Row 88: 5 empty cells.
- Row 89: 5 empty cells.
- Row 90: 5 empty cells.
- Row 91: 5 empty cells.
- Row 92: 5 empty cells.
- Row 93: 5 empty cells.
- Row 94: 5 empty cells.
- Row 95: 5 empty cells.
- Row 96: 5 empty cells.
- Row 97: 5 empty cells.
- Row 98: 5 empty cells.
- Row 99: 5 empty cells.
- Row 100: 5 empty cells.

Clues and starting letters:

- Row 3, Column 2: T
- Row 4, Column 4: I