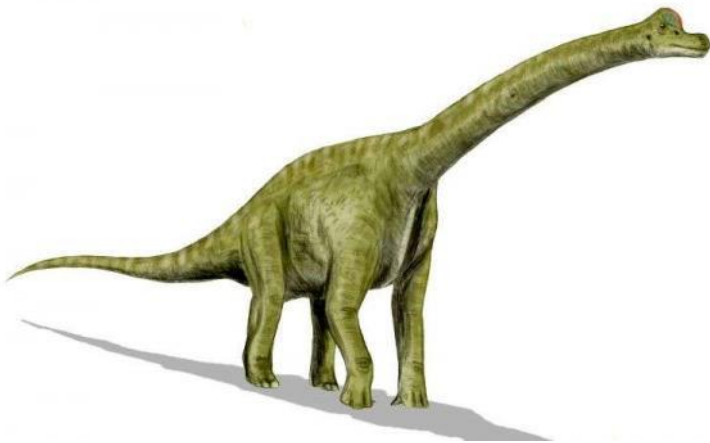


## LES DINOSAURES

Les dinosaures HERBIVORES sont :

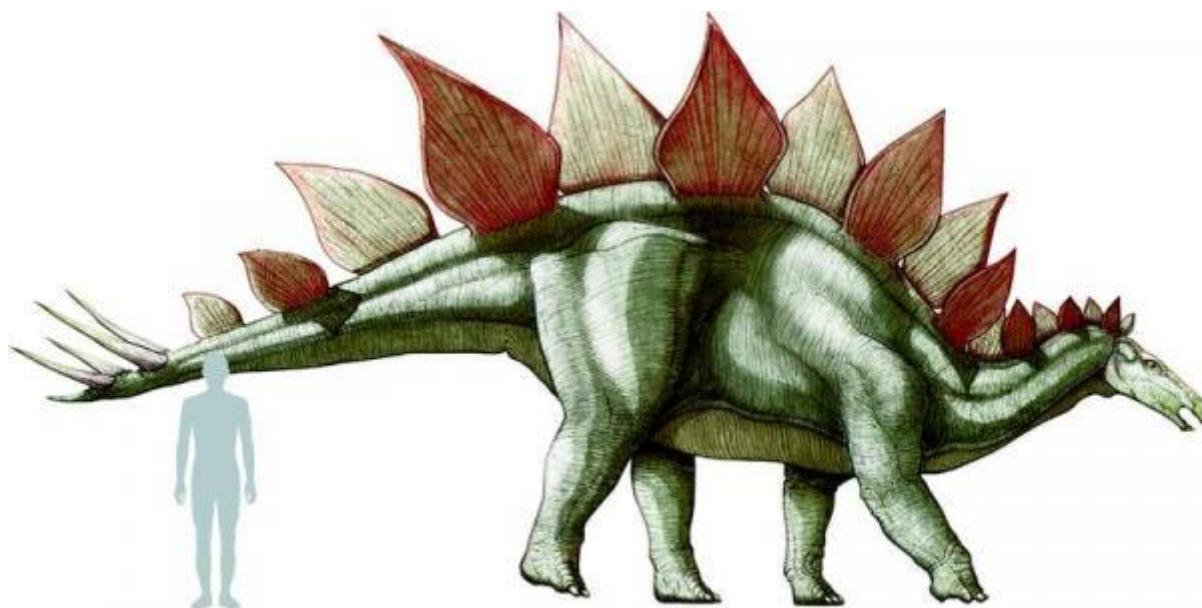
### LE BRACHIOSAURE



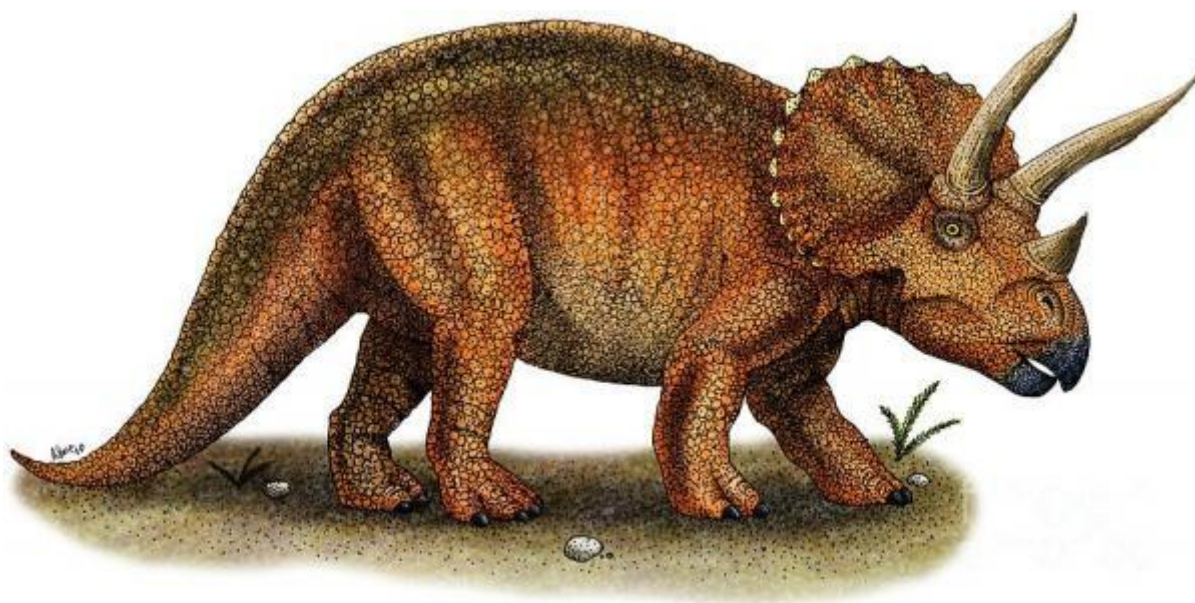
LE DIPLODOCUS 30 m de long / 4 m de haut



## LE STEGOSAURE



## LE TRICERATOPS 3 m

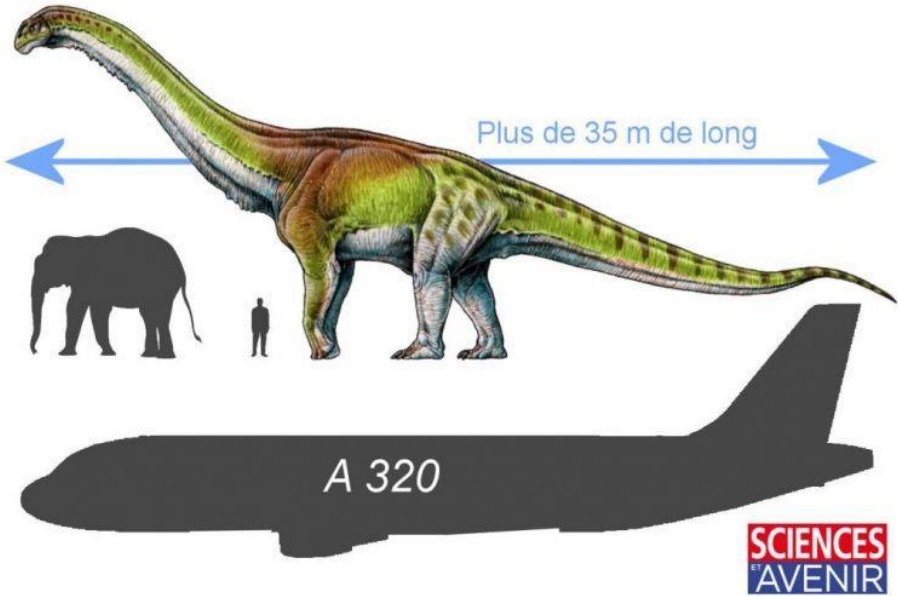


LE PROTOCERATOPS



PATAGOTITAN

LE



Les dinosaures CARNIVORES sont :

- **LE TYRANNOSAURE REX / T-REX** 12m de long / 6 m de haut



**LE VELOCIRAPTOR**

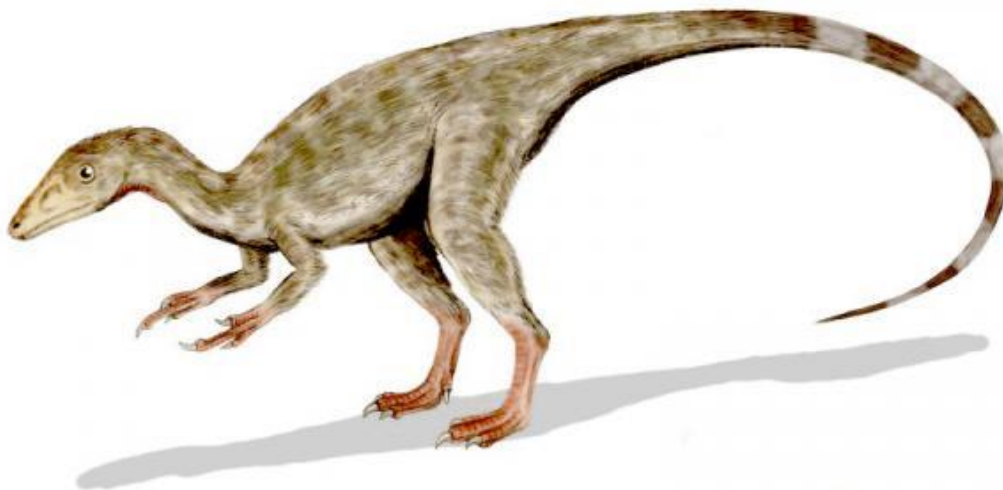




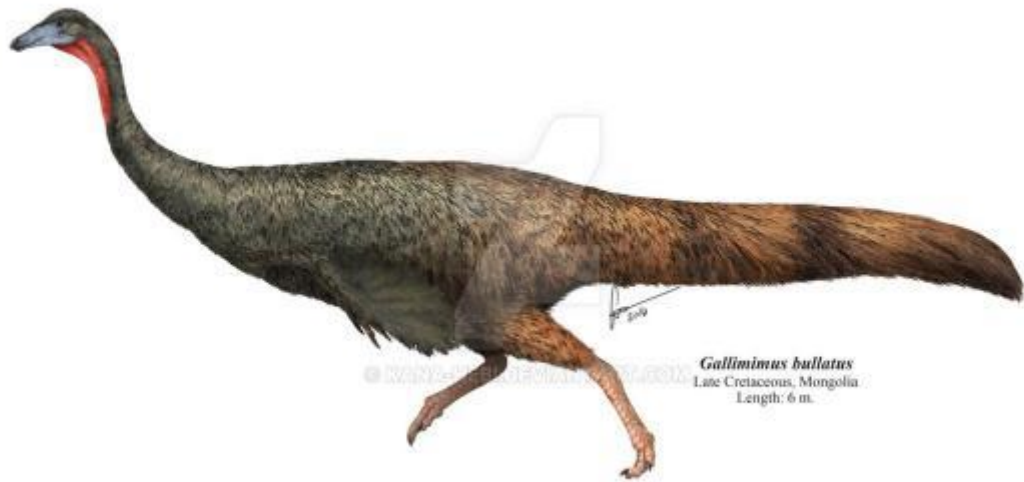
- **L'ALLOSAURE**



- **LE COMPSOGNATHUS**



## LE GALLIMIMUS



## • L' ALBERTOSAURUS

