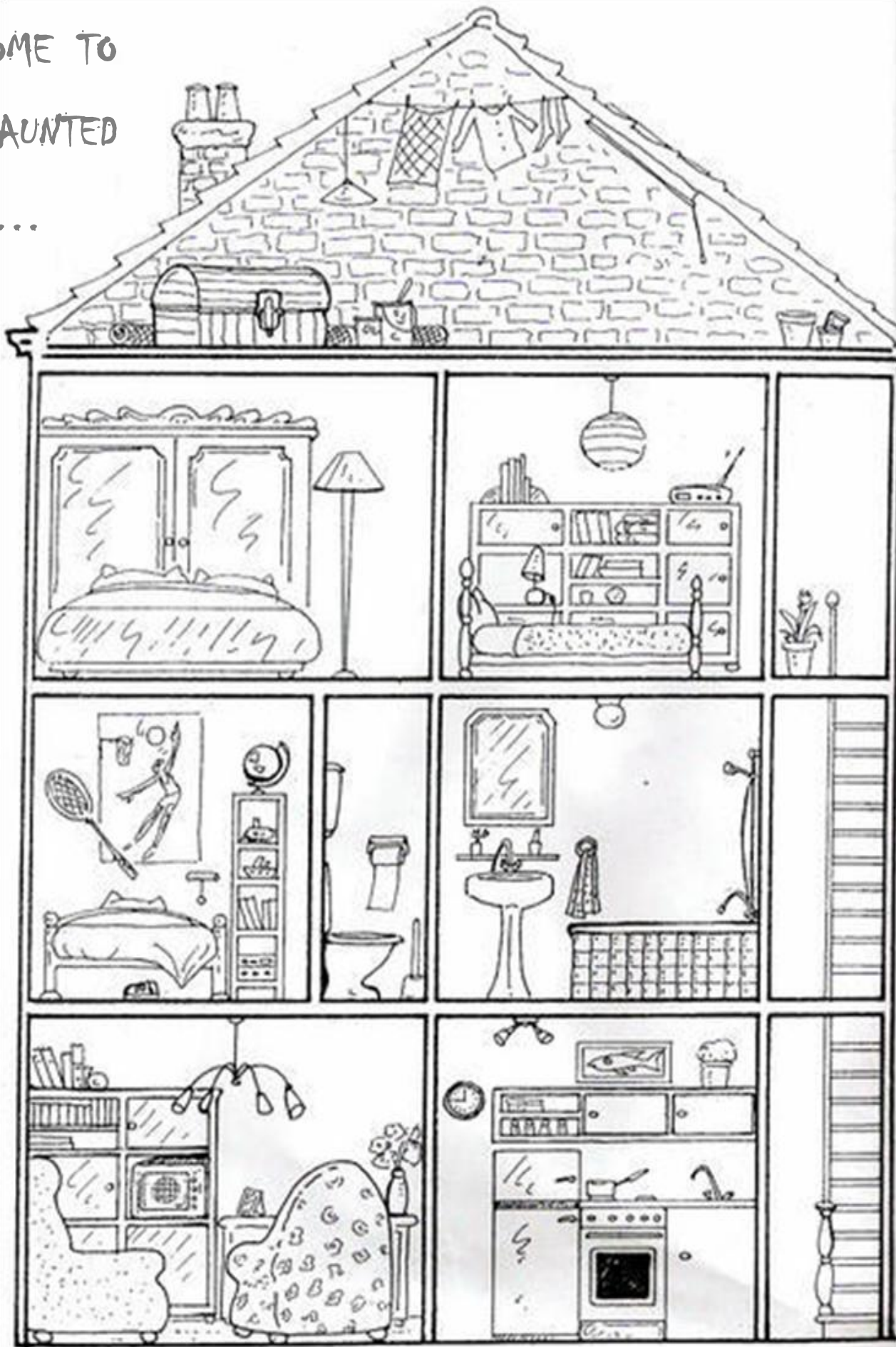
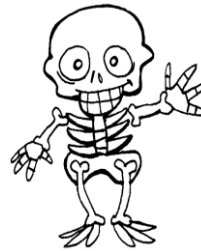


WELCOME TO
THE HAUNTED
HOUSE...



Read and glue the pictures.

The witch is in the kitchen.
The vampire is in a bedroom.
The monster is in the living-room.
The spider is on the stairs.
The ghost is in the attic.
The bat is in the bathroom.
The skeleton is in the toilet.

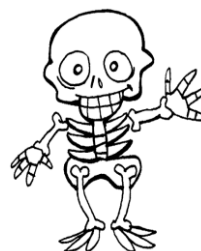


<http://lutinbazar.eklablog.com/>

Images : Service national du RÉCIT à l'éducation préscolaire (<http://recitpresco.qc.ca/>)

Read and glue the pictures.

The witch is in the kitchen.
The vampire is in a bedroom.
The monster is in the living-room.
The spider is on the stairs.
The ghost is in the attic.
The bat is in the bathroom.
The skeleton is in the toilet.



<http://lutinbazar.eklablog.com/>

Images : Service national du RÉCIT à l'éducation préscolaire (<http://recitpresco.qc.ca/>)

Look at the house and circle the good answer.

Is the skeleton in the kitchen ?

Yes it is.

No it isn't.

Is the monster in the living-room ?

Yes it is.

No it isn't.

Is the spider in the attic ?

Yes it is.

No it isn't.

Is the ghost in the toilet ?

Yes it is.

No it isn't.

Is the bat in the bathroom ?

Yes it is.

No it isn't.

Is the vampire in a bedroom ?

Yes it is.

No it isn't.

Is the witch on the stairs ?

Yes it is.

No it isn't.

Look at the house and circle the good answer.

Is the skeleton in the kitchen ?

Yes it is.

No it isn't.

Is the monster in the living-room ?

Yes it is.

No it isn't.

Is the spider in the attic ?

Yes it is.

No it isn't.

Is the ghost in the toilet ?

Yes it is.

No it isn't.

Is the bat in the bathroom ?

Yes it is.

No it isn't.

Is the vampire in a bedroom ?

Yes it is.

No it isn't.

Is the witch on the stairs ?

Yes it is.

No it isn't.